

# SALMON IN CRAIME SAUCE

Report date: 2/25/2025

## Nutrition




	per 100g	per 430
Energy	700kJ/168kcal	2745kJ/660kcal
Fat	10g	41g
of which Saturates	1.6g	6.2g
Carbohydrate	8.9g	35g
of which Sugars	3.2g	13g
Protein	8.5g	33g
Salt	0.39g	1.5g



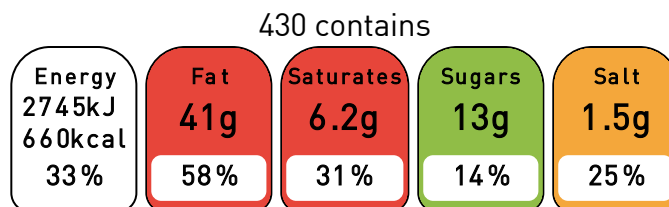
## Ingredient Declaration

Salmon [FISH], Tomato Juice, Red Peppers, Onions, WHEAT flour, Green Peppers, Sunflower Oil, Paprika, Cumin Seeds, Coriander Seeds, Sugar, Turmeric, Garlic, Cayenne Pepper, Salt

## Allergens

- Contains Gluten 
- Contains Wheat 
- Contains Fish 

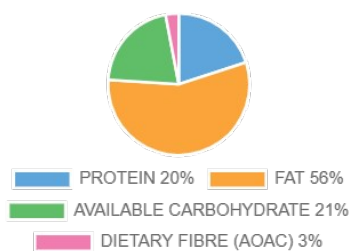
## Front of Pack



of an adult's reference intake

Typical values per 100g: 700kJ/168kcal

## Energy Contributions



## EU Reference Intakes

Per 100g		RI Quantity	% RI	
Energy	kJ	8400	700	8%
Total Fat	g	70.0	10.4	15%
Saturates	g	20.0	1.6	8%
Carbohydrate	g	260.0	8.9	3%
Sugars	g	90.0	3.2	4%
Protein	g	50.0	8.5	17%
Salt	g	6.0	0.39	6%